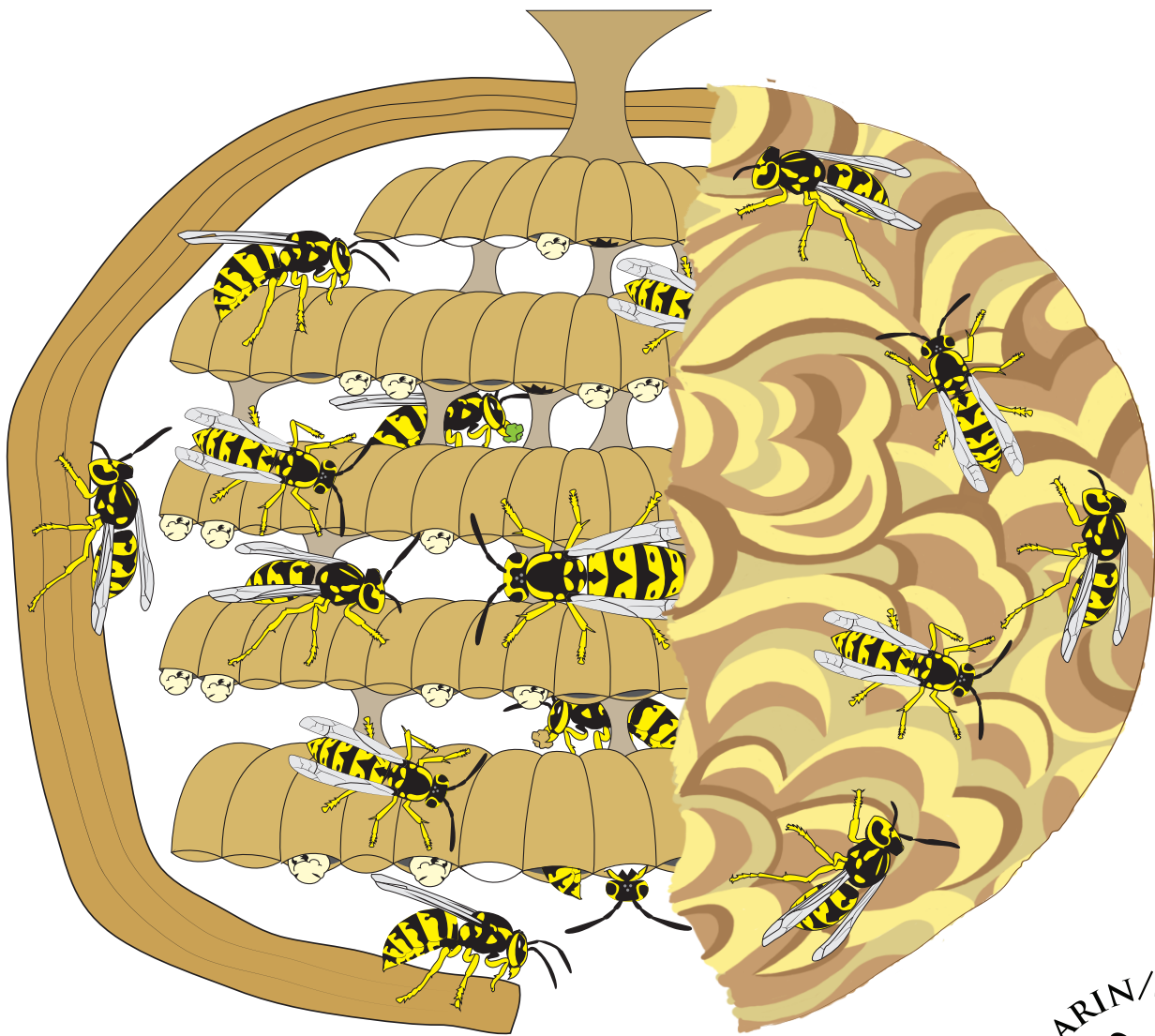


# Yellowjackets and Honey Bees

## Coloring & Activity Book

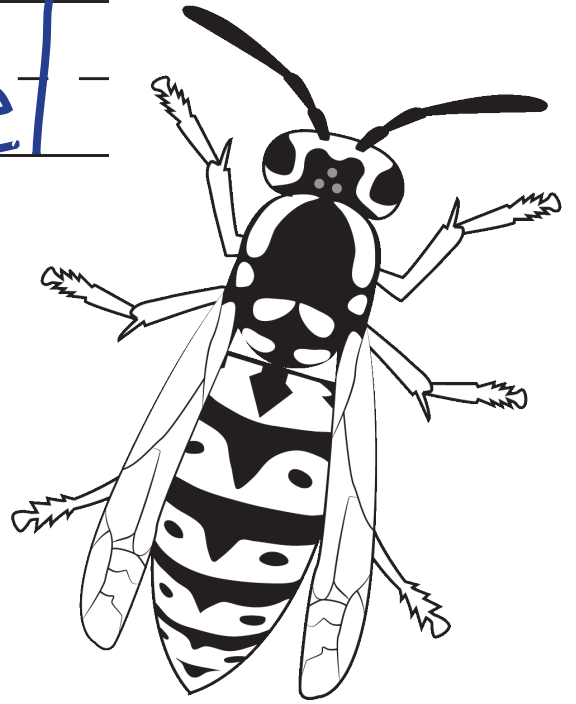


Name: \_\_\_\_\_



Color and

Label



Yellowjackets

---

---

---



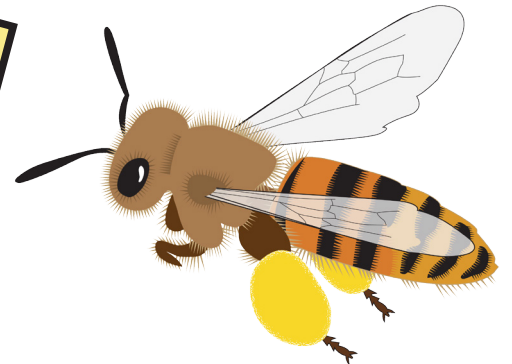
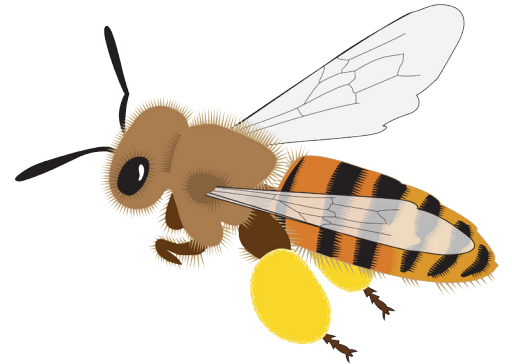
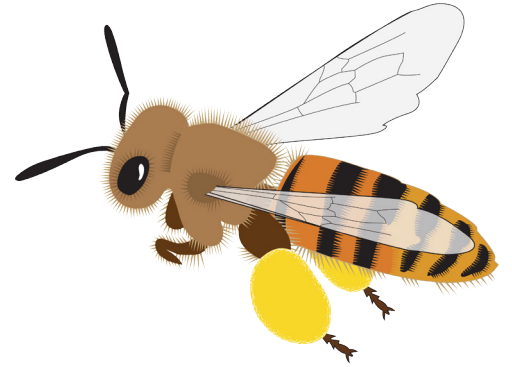
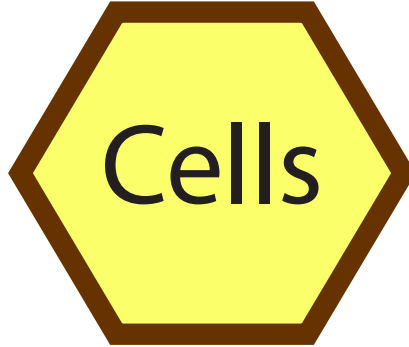
Honey bees

---

---

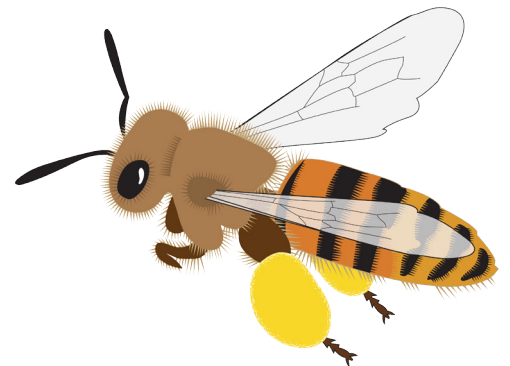
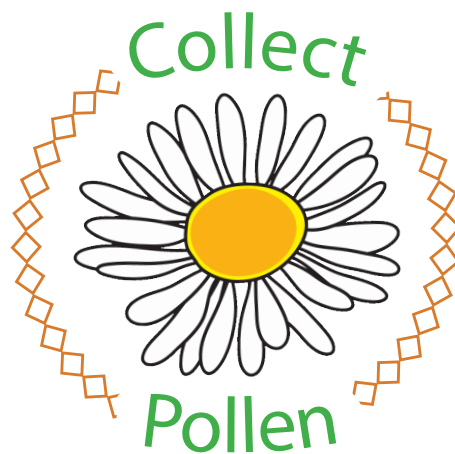
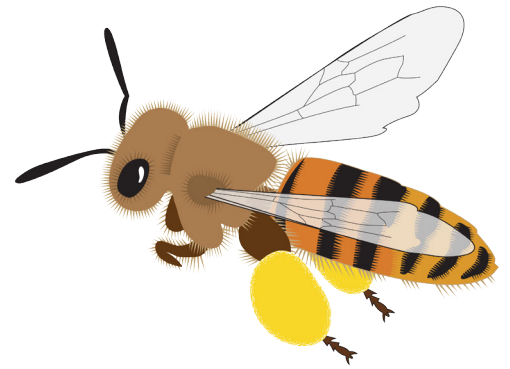
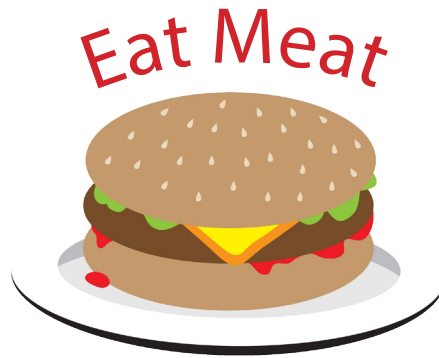
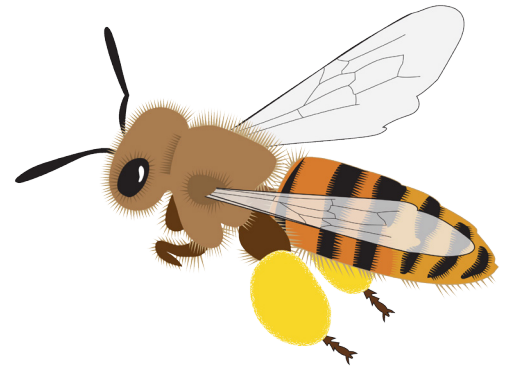
---

Circle the insects that make...



**Answers:** Both yellowjackets and honey bees make 6-sided cells in their nests. Honey bees make honey, and yellowjackets do not. Yellowjackets chew up wood and mix it with their saliva to make cells and paper covers for their nests. Honey bees make their cells out of wax.

# Circle the insects that...



**Answers:** Yellowjackets and honey bees can sting. Yellowjacket workers can sting repeatedly, while honey bee workers can only sting once. Yellowjackets gather meat to bring back to the nest, and honey bees do not. Honey bees have adaptations that help them gather pollen.

Count the yellowjackets.  
How many are there?

Why are there so many?  
(answers on back)

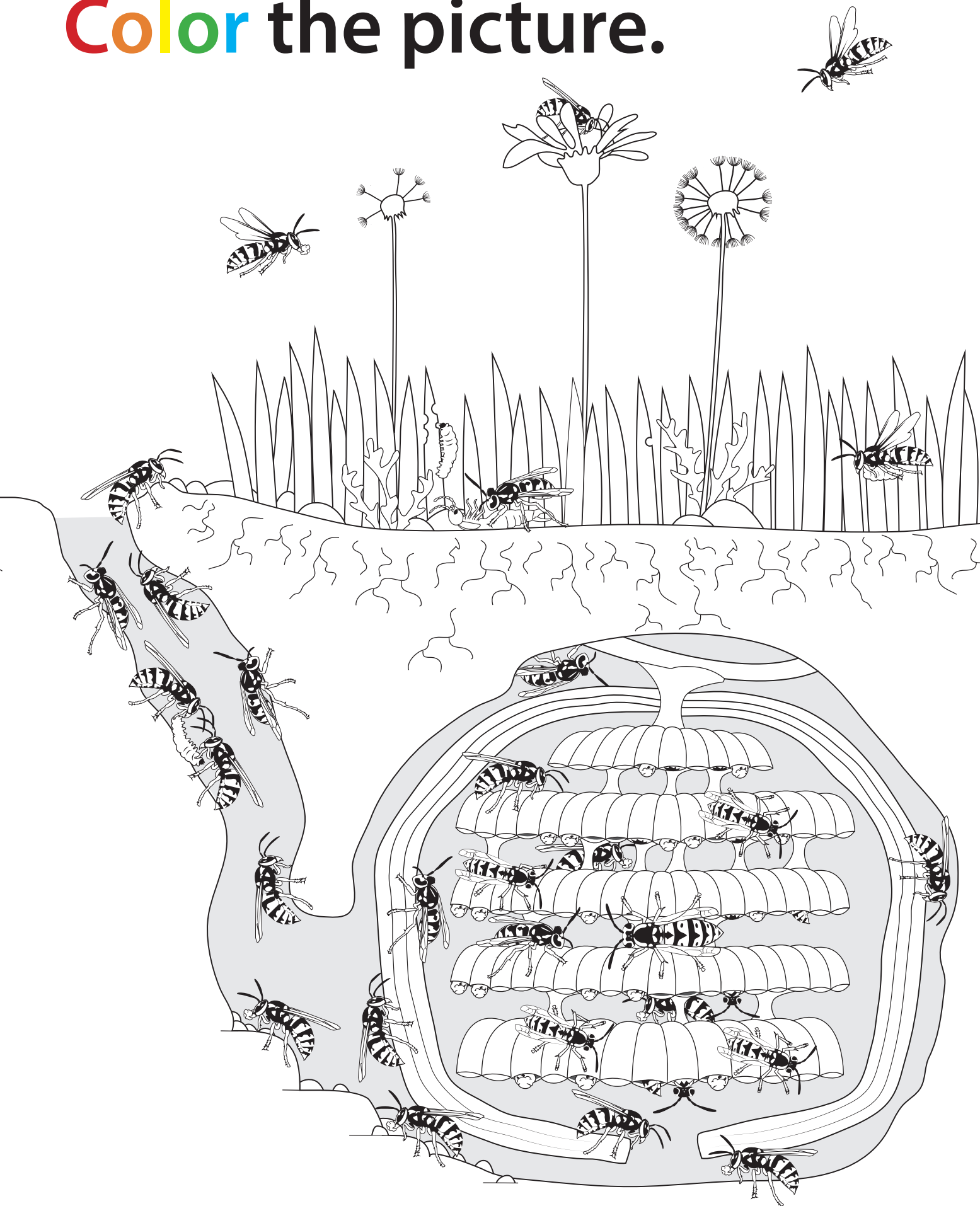




Draw a yellowjacket here.



Color the picture.



Dear parents,

Many people fear bees and yellowjackets. This program teaches students how yellowjackets are similar to honey bees in some ways, but also how yellowjackets are different. Students learn why yellowjackets are so dangerous, what to do if they find an entrance to a yellowjacket nest, and safety tips for eating outdoors.

Yellowjackets can be extremely problematic in Marin and Sonoma counties, especially during the warmer months. The Marin/Sonoma Mosquito & Vector Control District will eliminate ground nests (free of charge) when the location of the nest is known.

Please contact me if you have any questions about our programs.

### **Eric Engh**

Education Program Specialist

Marin/Sonoma Mosquito & Vector Control District

erice@msmosquito.com

### **Answers:**

There are 19 yellowjackets in the picture, and 5 main problems that are attracting yellowjackets to the picnic:

1. The yellowjacket trap is hanging over the picnic table (traps should be placed away from areas where people are eating).
2. Food should not be left uncovered.
3. Sweet drinks like soda should not be left out (stinging insects will crawl in!)
4. The lid to the trash can is not on all the way.
5. Litter is on the ground.



**Marin/Sonoma Mosquito & Vector Control District**  
call **1.800.231.3236** or **707.285.2200**  
or visit us online at **[www.msmosquito.com](http://www.msmosquito.com)**



[facebook.com/MSMVCD](https://facebook.com/MSMVCD)



[twitter.com/MSMVCD](https://twitter.com/MSMVCD)